



GULF TILE  
EST 1960

| TILE | STONE | LVP | WOOD |

2024 CATALOG

MULTI-FAMILY



| TAMPA | ST. PETERSBURG | SARASOTA | FORT MYERS |

COLOR COLLECTION

4X12 | 3X6 | 6X6



**MATTE | GLOSSY**



WHITE



GRAY



BISCUIT

NAIVE



WHITE

**GLOSSY**

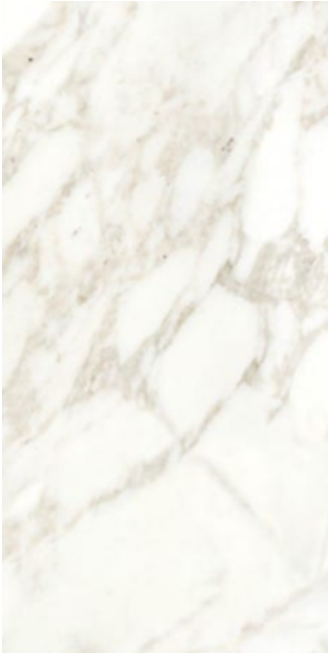


NATURAL



PEARL

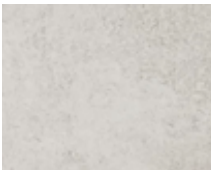
GALIA



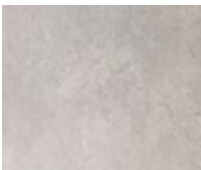
BLANCO

PORCELAIN FLOOR  
12x24  
18x18  
9x16 CERAMIC WALL

WINDMERE



SCOTTISH WHITE



ENGLISH GREY

CERAMIC FLOOR | WALL  
12x24  
2x2 MOSAIC

CONCEPT



BLANCO



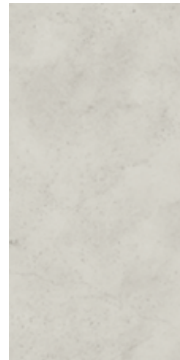
BEIGE



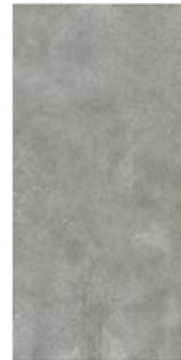
GRIS

PORCELAIN FLOOR  
12X24  
20X20  
CERAMIC WALL 9x16  
BULLNOSE

## FRIGIA



WHITE



GRAY



TAUPE



ANTHRACITE

PORCELAIN  
12x24  
24x24  
24x48  
2X2 MOSAIC  
3X24 BULLNOSE

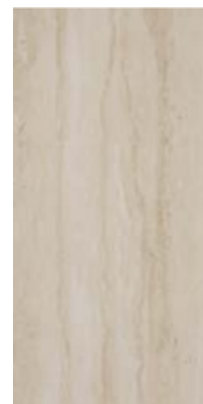
## MALHAM



PORCELAIN  
12X24  
2X2 MOSAIC  
3X24 BULLNOSE  
BULLNOSE



BLANCO



BEIGE



### WINTER STONE



ICE WHITE



PORCELAIN  
MATTE | POLISHED  
12x24  
2X2 MOSAIC  
4X12 BN

GLACIER GREY



PORCELAIN  
MATTE | POLISHED  
12x24  
2X2 MOSAIC  
4X12 BN



WHITE



TAUPE

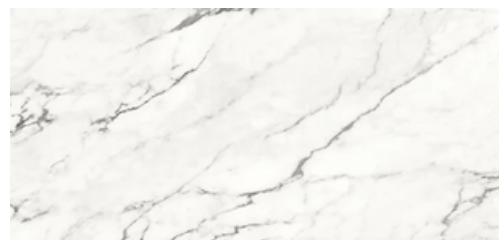
### SEDIMENT



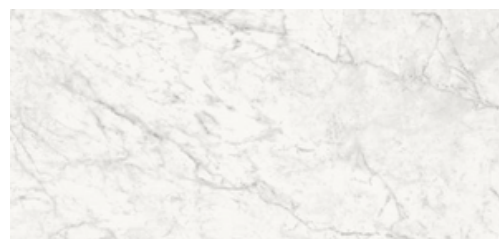
### NATURE | PORCELAIN



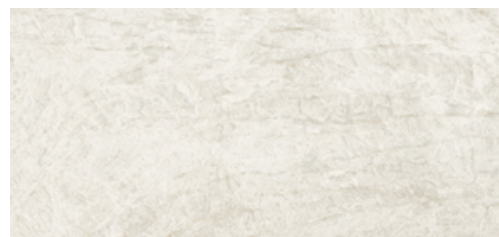
CALACATA GOLD



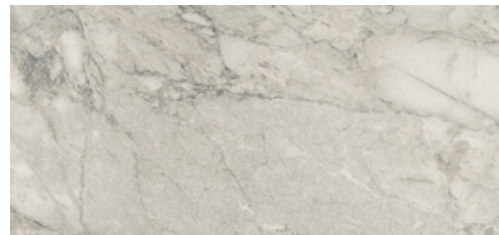
STATUARIO BIANCO



CARRARA



TAJ MAHAL



CALACATTA VAGLI

4X12 WALL  
12X24  
24X24  
24X48  
BULLNOSE  
12X12 2" MOSAIC  
HEX MOSAIC





SHERRON | PORCELAIN



ORO



WHITE SP01

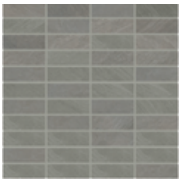


- 12X24
- 24X24
- 24X48
- BULLNOSE
- 12X12 2" MOSAIC
- 4" HEX MOSAIC

MODERN OASIS



- PORCELAIN MATTE
- 12X24
- 24X24
- 2X2 MOSAIC
- 1X3 STACKED MOSAIC
- BULLNOSE



SOFT CLOUD



HAZE

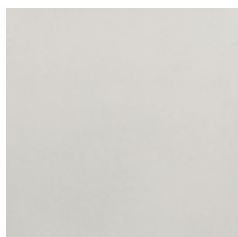


RAIN



STORMY SKY

## PRO | PORCELAIN



IVORY



NUDE



SAND



CEMENT



CONCRETE

12x24  
24x24  
24x48  
35x35  
3x12  
13x13 (2x2 mosaic)  
BULLNOSE

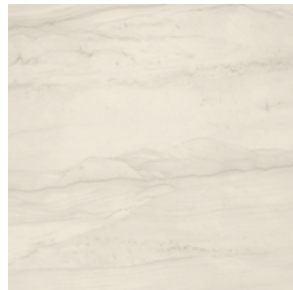
## ONYX WHITE | PORCELAIN



12x24  
24x48  
BULLNOSE



### QUARTZITES | PORCELAIN



MONT BLANC

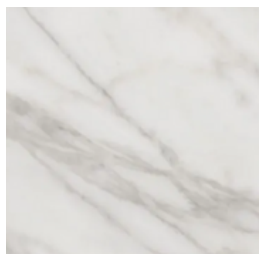
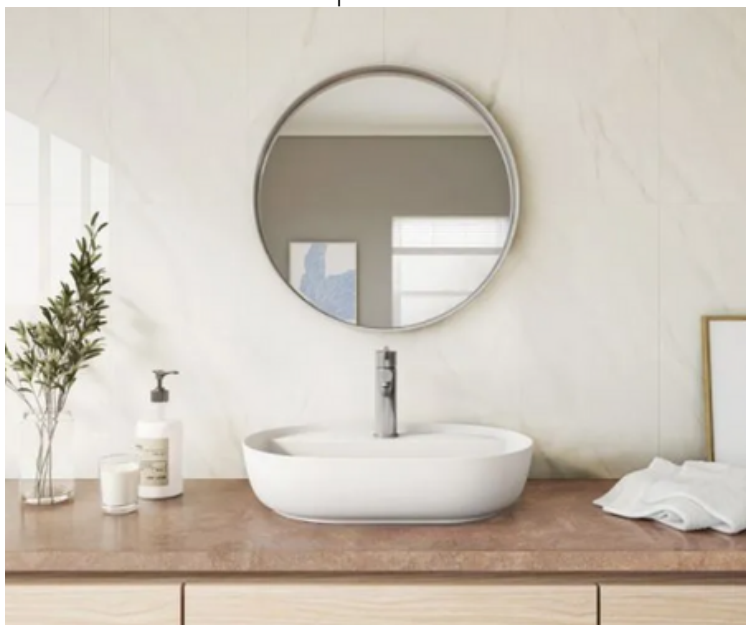


ATLANTICO

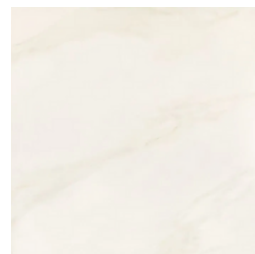
12X24  
24X48  
48X48  
BULLNOSE  
12X12 MOSAIC



### MARMI CLASSICO | PORCELAIN



GOLDEN CALACATA



BIANCO COVELANO

12X24  
24X24  
36X36  
24X48  
48X48  
BULLNOSE  
12X12 MOSAIC





## LUMBER



PORCELAIN  
6X24



GRAY



WHITE



HONEY

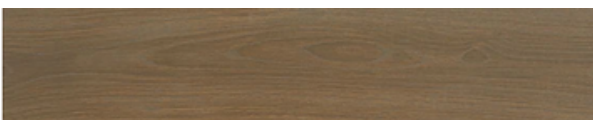
## MERONA 8X40 | PORCELAIN



WHITE



NATURAL



BROWN



GRAY



## ROCA ROBLE 8X48 | PORCELAIN



FRESNO



ROBLE



GRIS



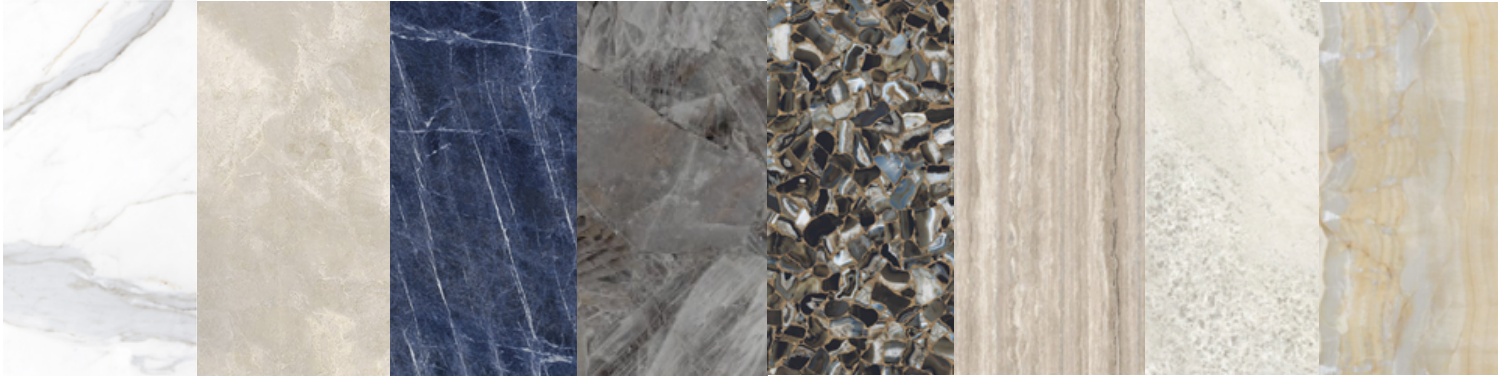
VISION





## 98 COLORS / STYLES

### MAXFINE



H270 MAXFINE

ART STONE

MARMI

HYMALAYAN

AGATA

TRAVERTINO

GEMSTONE

ONICI



### **AVAILABLE SIZES VARY BASED ON LINE**

#### PORCELAIN

8X8

12X24

24X24

29X29

24X48

48X48

59X29

## PresCORE

Installation	Glue Down
Wear Layer	12 mil with EnCore Technology
Core	2mm
Underlayment	none
Plank Size	6"x36"x2mm
Planks/Carton	36 pieces
SF/Carton	54 sqft
Cartons/Pallet	50 boxes
SF/Pallet	2,700 sqft per pallet

## CLAY



## SNOWCAP



## STRAW



## CLIFFSIDE





## GlueCORE

Installation	Glue Down
Wear Layer	22 mil
Thickness	3mm
Underlayment	none
Plank Size	12"x24"x3mm
Planks/Carton	18 pieces
SF/Carton	36 sqft per box
Cartons/Pallet	50 boxes per pallet
SF/Pallet	1,800 sqft per pallet

## BLACKROCK



## GREYSTONE



## MOONROCK



## RIVEROCK





## MaxCORE

Installation	Click Unilin Locking System
Wear Layer	28 mil with EnCore Technology
Thickness	6mm
Underlayment	CoreSet IXPE Intergrated Sound Reduction
Plank Size	7"x48"x6mm
Planks/Carton	10 pieces
SF/Carton	24.5 sqft per box
Cartons/Pallet	50 boxes per pallet
SF/Pallet	1,225 sqft per pallet

## TOURMALINE



## STORM BLACK



## PIANO WHITE



## PIANO BLACK



### SEA HARBOR | ENGINEERED HARDWOOD



#### PRODUCT PROFILE

WIDTH: 6"

LENGTH: UP TO 60"

THICKNESS: 7/16"

SQFT PER CARTON: 27.5

SPECIES: EUROPEAN OAK

INSTALL METHOD:

FLOATING

GLUE DOWN

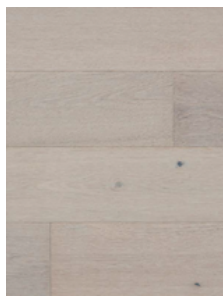
STAPLE

SURFACE TYPE: BRUSHED SURFACE

APPLICATION:

RESIDENTIAL

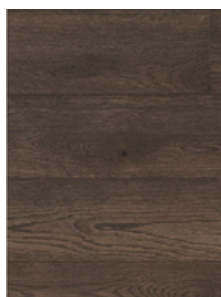
LIGHT COMMERCIAL



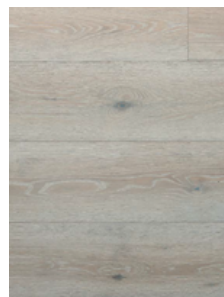
BIANCO



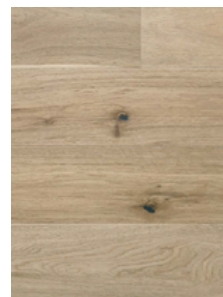
CHACHEMIRA



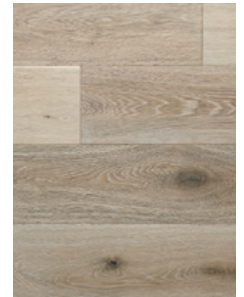
CASTANO



NIEBLA GRAY



GRANO SECO



PERLA

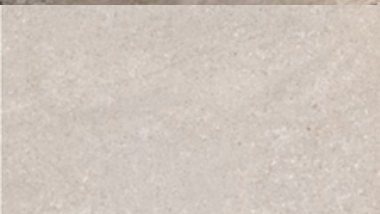


# PAVERS

| MULTI-FAMILY CATALOG |



## CHAMONIX



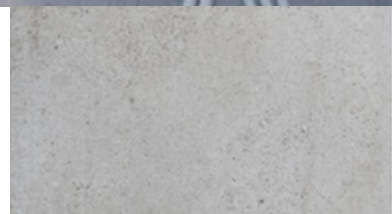
BEIGE



BIANCO



DARK GRAY



GRAY

PORCELAIN

24X48

12X24

24X24

POOL COPING



INTERIOR / EXTERIOR  
PORCELAIN PAVER SETS

## WEST 57TH



GRAY

BIANCO

BEIGE

PORCELAIN

24X24

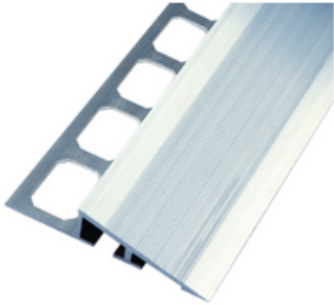
12X24

POOL COPING



| TAMPA | ST. PETERSBURG | SARASOTA | FORT MYERS |

## PROFILES



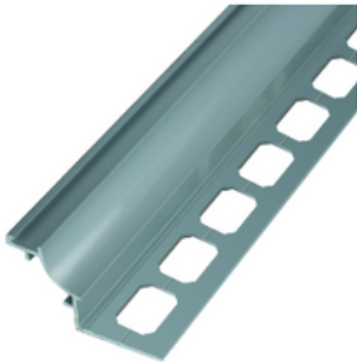
**TRANSITION PROFILES** | Used to transition between flooring materials of differing heights.



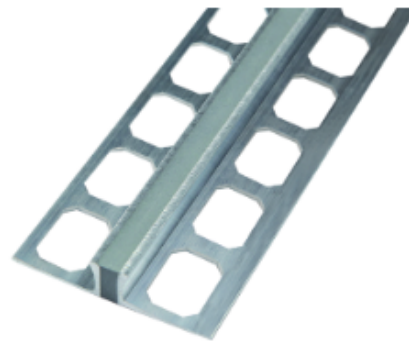
**L-Shaped Edging Profiles** Made of Aluminum are designed for use as both edge protection against chipping and cracking of the unfinished tile edge and as a decorative element.



**STAIR PROFILES** | Protect delicate stair nosings in your home with profiles specifically designed to handle the wear and tear of high traffic. Beyond an impeccable finish and style, stair profiles can also provide safety by adding traction to steps on both residential and commercial applications.



**COVE PROFILES** | allow you to create transitions between vertical and horizontal surfaces, such as walls, floors, countertops, vanities, and more. Coves eliminate hard corners, helping to prevent the buildup of dirt, are easy to clean, and have available inside and outside corner pieces to complete your unique look.



**MOVEMENT AND EXPANSION JOINTS** | Protect your floor from cracks and movement with a full line of expansion joint profiles. Designed to install over expansion joints in the substrate, these EPDM rubber filled profiles are available in a number of widths and heights.

## SHOWER SYSTEMS



HYDRO BAN is a thin, load bearing waterproofing/crack isolation membrane that does not require the use of fabric in the field, coves or corners.



HYDRO BARRIER is a thin, load bearing, self-curing liquid rubber polymer which can be easily applied to form a flexible seamless waterproof / antifracture membrane.



254 PLATINUM is the ultimate one-step, polymer fortified, thin-set mortar for interior and exterior installation of ceramic tile, porcelain tile, Gauged Porcelain Tile Panels/Slabs (GTP), stone, quarry tile, pavers and brick.

## SOUND BARRIER



125 Sound & Crack Adhesive is a superior crack prevention and sound isolation adhesive mortar.



170.5 Sound & Crack Isolation Mat is a high performance anti-fracture / sound and crack isolation membrane designed to be used under thin-bed adhesive for interior floor installations of ceramic tile, marble, stone and brick to reduce the transmission of impact noise and help provide soundproofing between floors and isolate cracks in the substrate.



## TILE INSTALL



The New & Improved PERMACOLOR Grout is a high-performance grout offering Water Dispersion Technology™ for greater strength and more stain resistance, providing a better experience for the installer and long-lasting results for the customer.



LATASIL sealant is a high performance, one component, neutral cure, 100% silicone sealant designed for ceramic tile & stone applications.



The ultimate, lightweight one-step, polymer fortified, Large and Heavy Tile mortar for interior and exterior installation of ceramic tile, porcelain tile, glass tile, stone, quarry tile, pavers and brick. MULTIMAX LITE features maximum non-sag performance on walls and maximum buildup of up to ¾" (19 mm) without shrinkage on floors.

## ADDITIONAL RECOMMENDATIONS



A high performing uncoupling membrane for tile and stone installations offering crack isolation.



NXT Level is a cement-based underlayment for use in leveling interior substrates.